

series 200
AOD 200 MD/HD HA



LASER FUMES



DUST AND SMOKE



SOLDERING FUMES



ODORS, GASES, AND VAPORS



CLEANING INDUSTRIAL GASES



NEW EMISSIONS



WELDING FUMES



OIL AND EMULSION MISTS



COMPLETE SOLUTIONS

Date of issue: 01/2015



Extraction. Filtration. Persistence.



Use and application

The **AOD 200 MD/HD HA** is suitable for collecting and filtering oleaginous and non-combustible types of dust contained in non-explosive air mixtures. Any of those partially unhealthy substances ought to be extracted by collecting elements directly at their place of origin and filtered by the AOD 200 MD/HD HA. The combination of a sublimation filter, a main particulate filter and an adsorption filter guarantees a separation efficiency of 99.95 %, provided the filter combination is maintained or replaced at regular intervals and the oil sump gets emptied regularly.

Examples

Machining processes using coolants and lubricants

- ➔ milling
- ➔ drilling
- ➔ lathing

ULT 200 mobile extraction and filtration unit

- ➔ mobile unit with castors
- ➔ with filter replacement system
- ➔ continuously welded oil sump
- ➔ control elements at the front side
- ➔ robust steel housing
- ➔ powder coated
 - vacuum module RAL 7001 silver grey
 - filter module RAL 7035 light grey

Filter system:

Storage filter system

Filters which are replaced once they are saturated.

Filter technology:

Main filter module HA

- (1) Expanded metal filter
metal knitting, sublimation filter
- (2) Baffle plate separator
metal profile, sublimation filter
- (3) Particle filter cassette H13
filter class: H13 HEPA-filter according
to DIN EN 1822
- (4) Adsorption filter cassette
Filter medium: activated charcoal

Equipment

Oil level indicator: easy monitoring of the separated amount of oil

Oil drain cock: oil sump can be emptied during operation

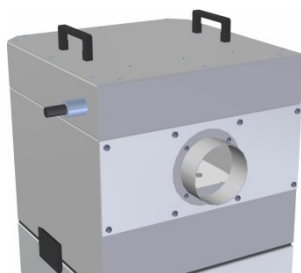




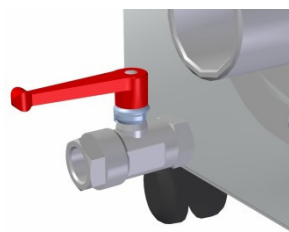
AOD 0200.0-aa.bb.cc.5015

Parameter	unit	-MD.14.01	-MD.40.00.	-HD.10.01.	-HD.11.01.
Max. air flow	m ³ / hr	635	420	210	80
Max. vacuum	Pa	3.200	1.100	20.700	4.400
Nominal capacity	m ³ /hr / Pa	250 / 2.000	200 / 900	120 / 13.000	70 / 1.000
Motor-nominal power	kW	0,36	0,12	1,20	0,25
Nominal voltage	V	1~ 230	1~ 230	1~ 230	1~ 230
Nominal current	A	2,2	1	6	1
Frequency	Hz	50 / 60	50	50	50
Protection class	IP	54	54	54	54
Type blower		EC-blower	ventilator	coll. turbine	turbine
Noise level (at 50 - 100%)	dB(A)	50 - 54	52 - 57	63 - 70	52 - 57
Air flow controller		yes	no	yes	yes
Air intake	Ø	1x intake nozzle 50 mm; optional: 1x Ø75 / 1x ; Ø80 mm			
	position	At the lower front side			
Air outlet		air exhaust louver, optional Ø 100 mm exhaust nozzle			
	position	upper part of the backside			
Width	mm	390	390	390	390
Depth	mm	570	490	490	490
Height	mm	900	900	820	900
Weight	kgs	ca. 40			
Length of power cable	m	3,0 outlet at upper side			
Filter system	HFM HA	Main filter module HA			
		filter system: storage filter			
		filter set complete consisting of:			
	(1)	Expanded metal filter			ULT 02.0.006
	(2)	Baffle plate separator			ULT 02.0.051
(3)	Particle filter cassette H13			ULT 02.1.081	
(4)	Adsorption filter cassette			ULT 02.1.049	
Options:					
exhaust air connection (option)	(1*)	1 x Ø 100 mm			
oil drain cock	(2*)	front side on the left			
oil level indicator	(3*)	front side on the right			

(1*)

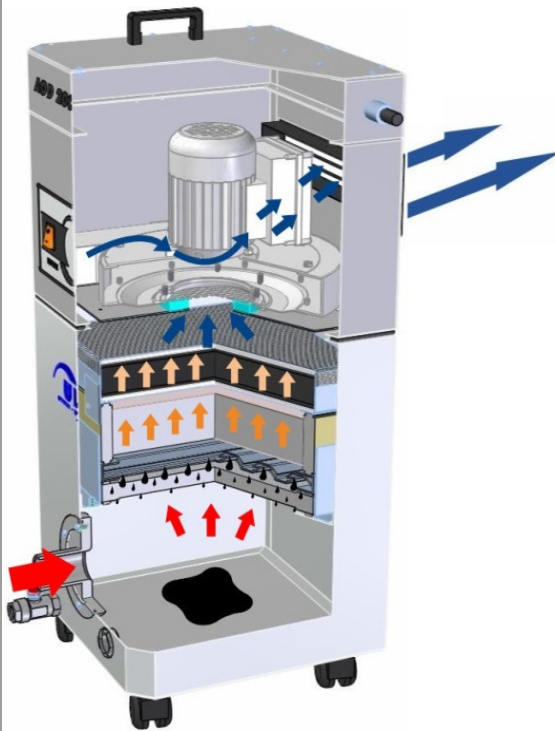


(2*)



(3*)





-  raw gas
-  filtration
-  clean gas
-  oil separation

Functional principle:

At the clean-air side of the filter, a vacuum generator with a high pressure reserve produces a volume flow matched to the respective application. This volume flow can be individually and infinitely variably regulated. Thus, the polluted air will be reliably extracted.

Coarse dust and aspirated **oil mist** are held back at the sublimation filters. The filter shape leads to an agglomeration of the oil mist to larger drops which are collected in the oil sump at the bottom.

Further **particle fractions** are separated and held back by the HEPA H13 filter. **Gaseous and vaporous air pollutants** are separated (adsorbed) in an activated charcoal filter.

The filtering effect of activated charcoal is based on adsorption, i. e. an accumulation of substances (to be filtered out) on the surface of the activated charcoal. During this process there are no chemical reactions and changes of the captured substances. The construction of the filter elements underlies the air volume of the unit; the contact time is based on a medium adsorption reaction.

Storage filter system

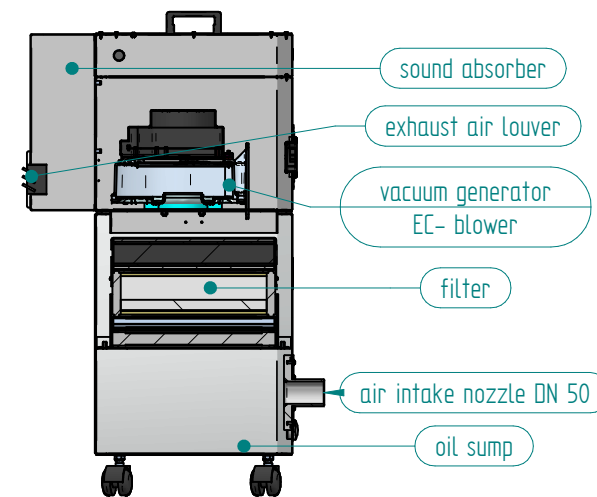
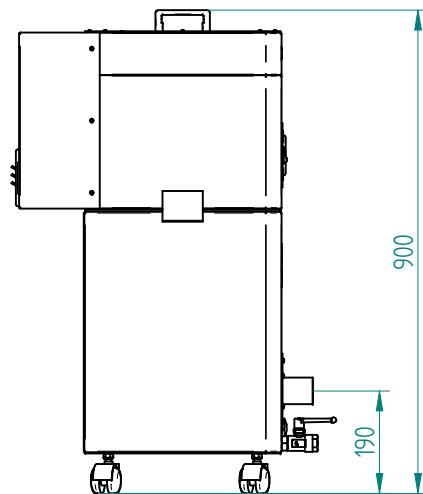
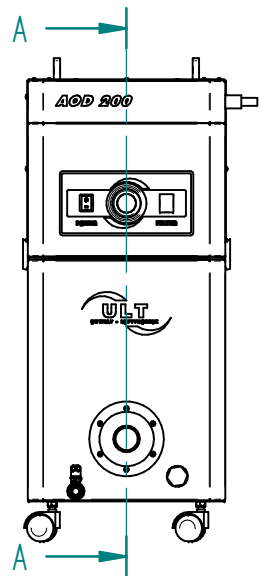
Filters which are replaced once they are saturated.

Main filter module HA3

- | | |
|-------------------------------|--|
| (1) sublimation filter | Expanded metal filter |
| (2) sublimation filter | Baffle plate separator |
| (3) particulate filter | HEPA filter H13 |
| (4) gas filtration | Adsorption filter (activated charcoal) |

This excellent filter efficiency makes it possible to recirculate the **filtered air** and reduce energy costs.

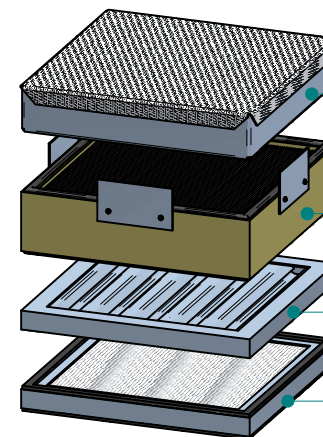
For the extraction and filtration from pollutants varying from this application case, other module combinations are available.



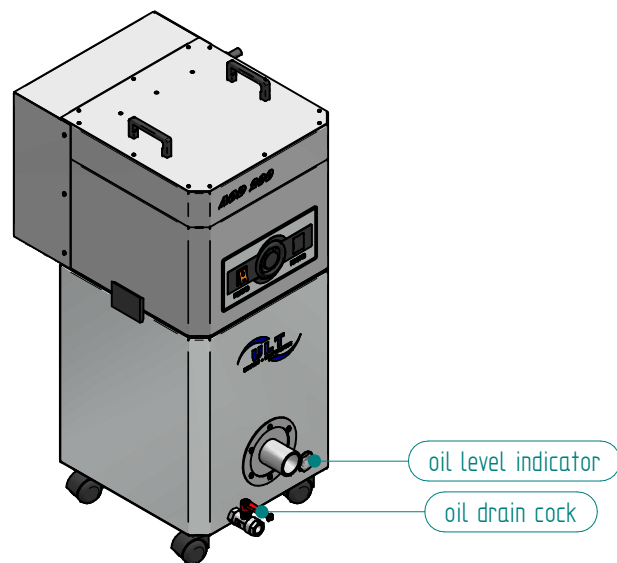
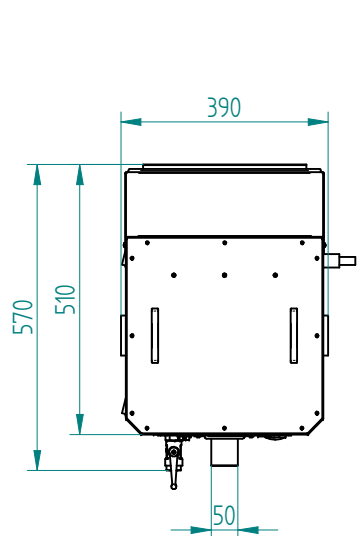
cutaway A-A

- sound absorber
- exhaust air louver
- vacuum generator
EC- blower
- filter
- air intake nozzle DN 50
- oil sump

Filter set consisting of:



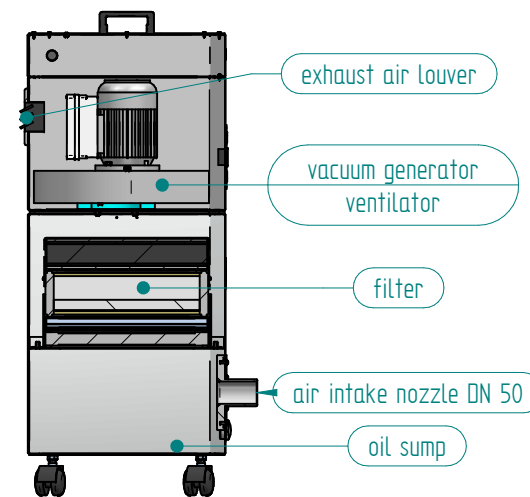
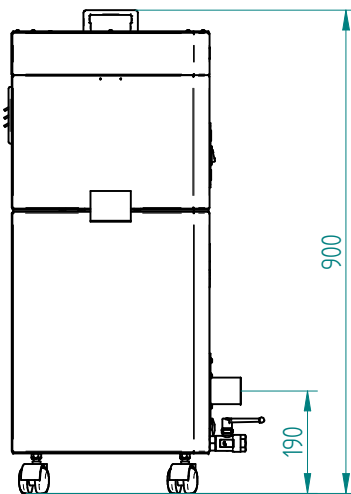
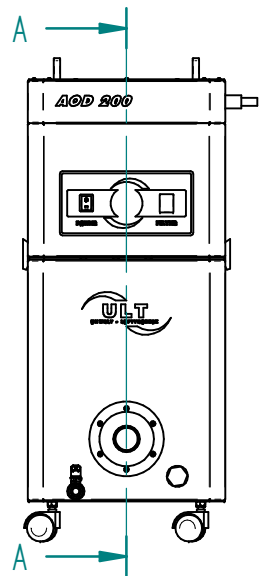
- adsorption filter
ULT 02.1049
- particle filter H13
ULT 02.1081
- baffle plate separator
ULT 02.0051
- expanded metal filter
ULT 02.0006



Weitere Maße sind dem 3D-Datensatz zu entnehmen. Für die Zeichnung behalten wir uns alle Rechte vor.
Other measure are to be taken from the 3D record. For the drawing we reserve ourselves all rights.

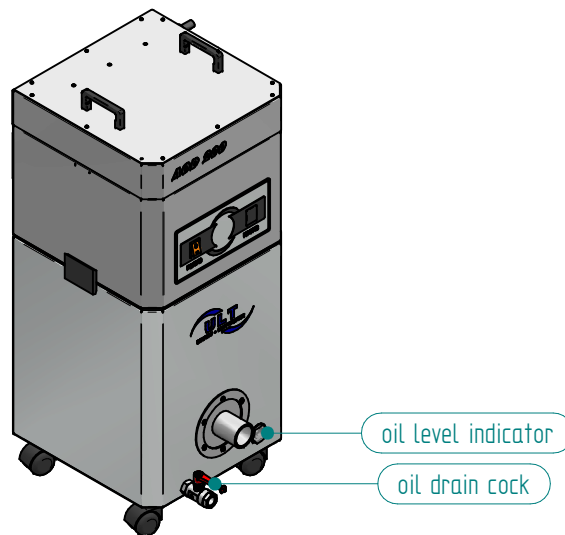
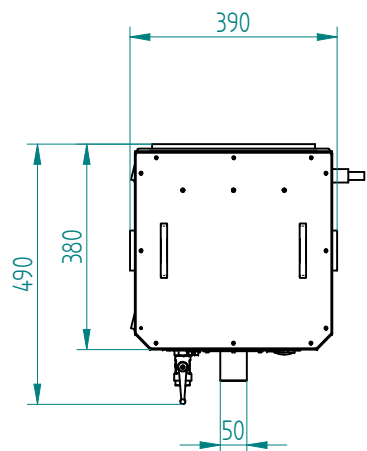
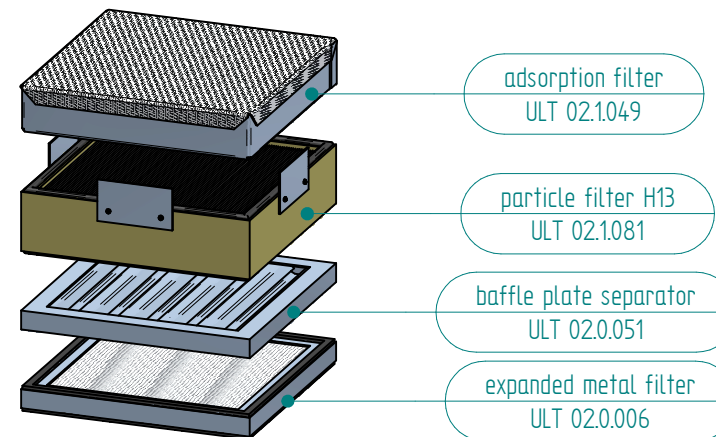


				ULT AG Am Gopelreich 1 D-02708 Lobau		designation: AOD 200 MD.14 HA 250 m³/h V AOD0200.0-MD.14.015015		
		2014	date		name		drawing number:	scale:
001	base	22.09.14	JSA CZ	edit.	22.09.	JSA CZ	ULT 200_00_284	
issue	revision	day	name	verf.				
				Norm				



cutaway A-A

Filter set consisting of:



exhaust air louver

vacuum generator ventilator

filter

air intake nozzle DN 50

oil sump

adsorption filter
ULT 02.1049

particle filter H13
ULT 02.1081

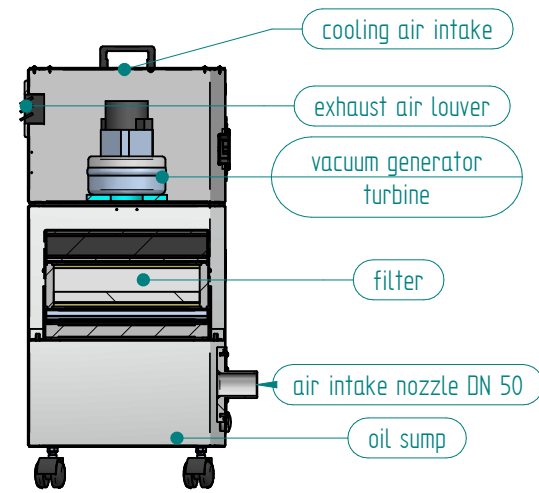
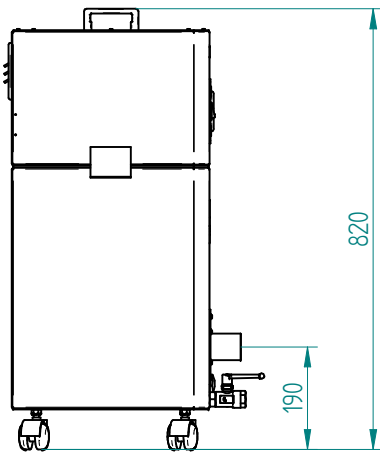
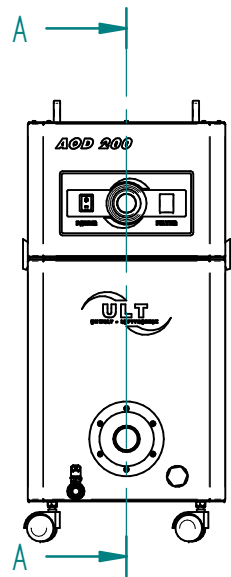
baffle plate separator
ULT 02.0051

expanded metal filter
ULT 02.0006

Weitere Maße sind dem 3D-Datensatz zu entnehmen. Für die Zeichnung behalten wir uns alle Rechte vor.
Other measure are to be taken from the 3D record. For the drawing we reserve ourselves all rights.

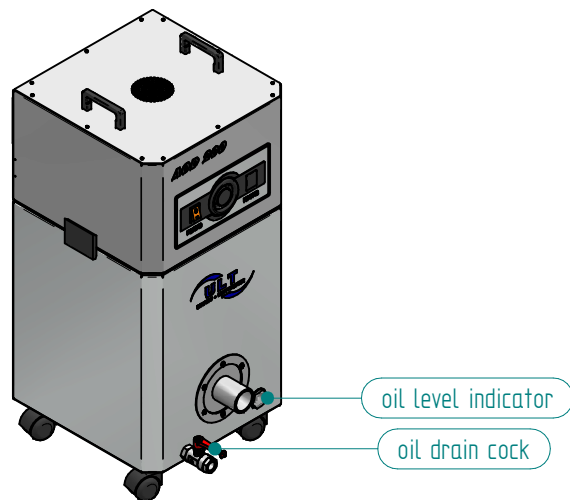
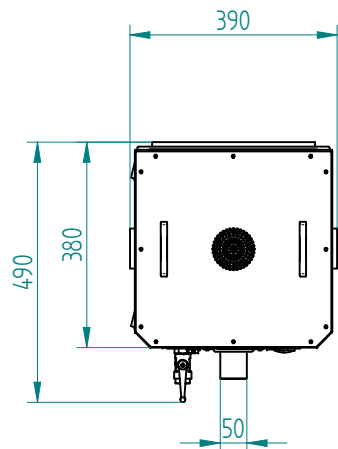
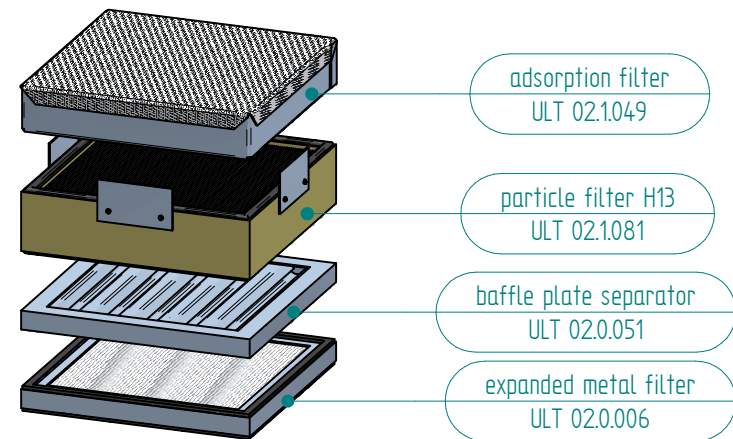


				ULT AG Am Gopelreich 1 D-02708 Lobau		designation: AOD 200 MD40 HA 200 m³/h AOD0200.0-MD40.00.5015	
				2014	date	drawing number:	
001	base	22.09.14	JSACZ	edit.	22.09.	JSACZ	scale:
issue	revision	day	name	verf.			ULT 200_00_284
				Norm			



cutaway A-A

Filter set consisting of:



cooling air intake

exhaust air louver

vacuum generator turbine

filter

air intake nozzle DN 50

oil sump

adsorption filter
ULT 02.1049

particle filter H13
ULT 02.1081

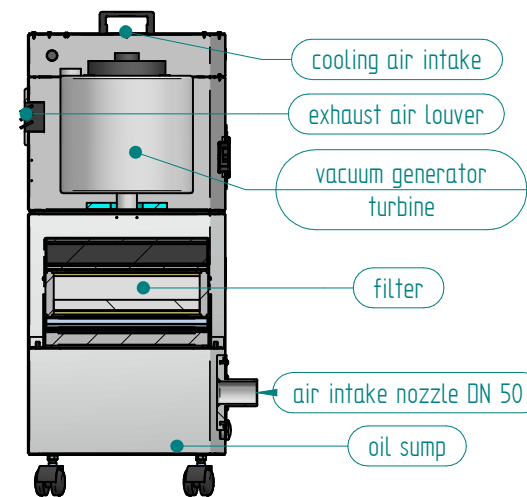
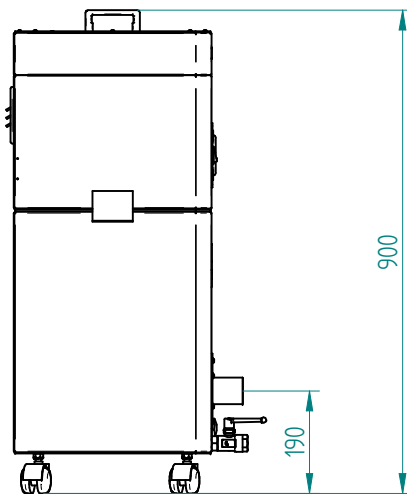
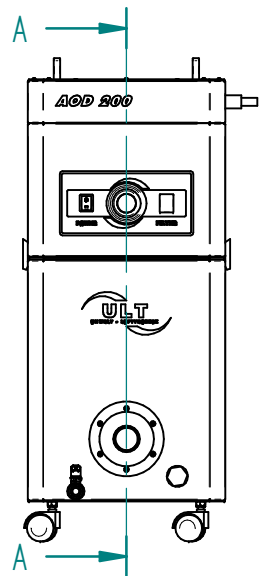
baffle plate separator
ULT 02.0051

expanded metal filter
ULT 02.0006

Weitere Maße sind dem 3D-Datensatz zu entnehmen. Für die Zeichnung behalten wir uns alle Rechte vor.
Other measure are to be taken from the 3D record. For the drawing we reserve ourselves all rights.

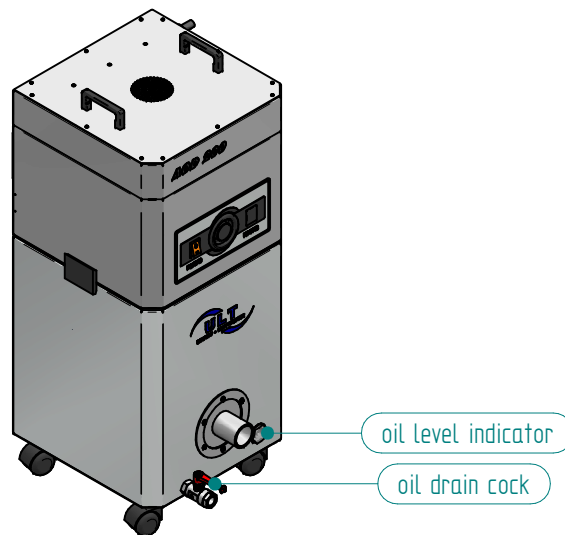
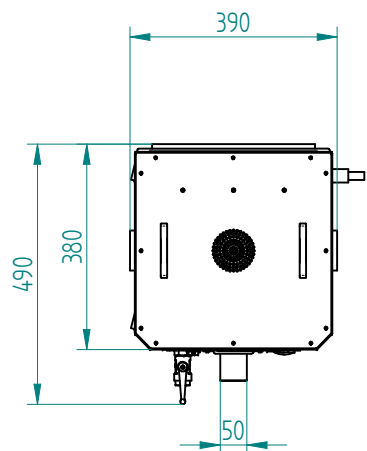
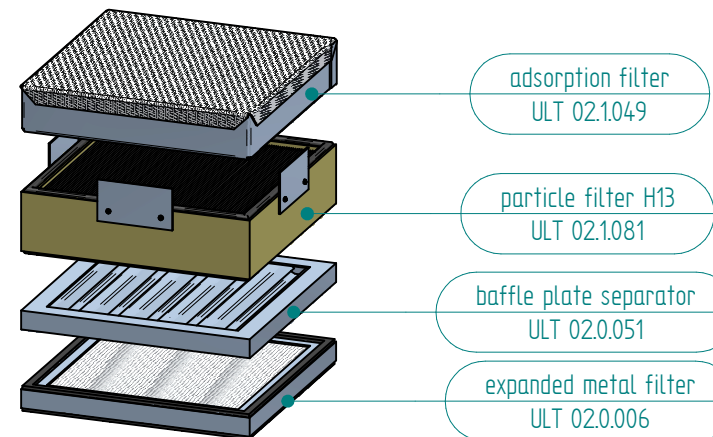


				ULT AG Am Gopelreich 1 D-02708 Lobau		designation: AOD 200 HD.10 HA 120 m³/h V AOD0200.0-MD.10.015015	
2014	date	name	22.09.	edit.	JSACZ	drawing number:	scale:
001	base	22.09.14	JSACZ	edit.	22.09.	JSACZ	ULT 200_00_284
issue	revision	day	name	verf.	Norm		



cutaway A-A

Filter set consisting of:



Weitere Maße sind dem 3D-Datensatz zu entnehmen. Für die Zeichnung behalten wir uns alle Rechte vor.
Other measure are to be taken from the 3D record. For the drawing we reserve ourselves all rights.



				ULT AG Am Gopelreich 1 D-02708 Lobau		designation: AOD 200 HD.11 HA 70 m³/h V AOD0200.0-MQ.11015015	
				2014	date	drawing number:	
001	base	22.09.14	JSACZ	edit.	22.09.	JSACZ	scale:
issue	revision	day	name	verf.			ULT 200_00_284
				Norm			